



E-Lastic Sand 1.0 E-Lastic Swirl 1.5 E-Lastic Sand 1.5 E-Lastic Choice 0.75

Elastomeric Finishes

Test	Method	Criteria	Results
Abrasion Resistance	ASTM D968	1,000 liters of sand	Pass
Accelerated Weathering	ASTM G153 (Formerly ASTM G23)	No deleterious effects at 2000 hours when viewed under 5x magnification	Pass
Flexibility (Mandrel Bend)	ASTM D522	No Criteria	.5" mandrel bend at -4°F; .5" mandrel bend at 32°F; .5" mandrel bend at 70°F Pass
Freeze Thaw Resistance	ASTM E2485	10 Cycles	Pass
Fungus Resistance	MIL 810B Method 508	28 days	Pass, No growth.
Mildew Resistance	ASTM D3273	No growth supported during 28 day exposure period	Pass @ 35 days
Scrub Resistance	ASTM D2486	No Criteria	Pass @ 10,000 cycles
Water Vapor Permeability	ASTM D1653	No Criteria	Water Permeable; does not create a vapor barrier.
Water Vapor Transmission	ASTM E 96 Procedure B	Vapor Permeable, does not create a vapor barrier	Vapor Permeable
VOC	EPA Ref. Test Method 24	US, EPA South Coast AQMD and Green Seal Standard	20 g/L

*Tested with Teifs Basecoat



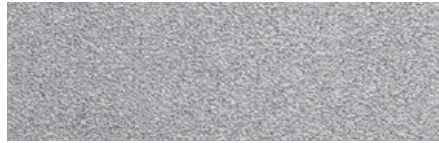
E-LASTIC SWIRL 1.5



E-LASTIC SAND 1.0



E-LASTIC SAND 1.5



E-LASTIC CHOICE 0.5

DESCRIPTION:

- 100% Acrylic-based elastomeric textured finish
- Dirt Pick-up Resistance (DPR) chemistry
- Highly flexible: can bridge pre-existing or existing hairline cracks
- Integrally colored with high quality pigments

USES:

- Exterior finish coat for:
- EIFS, One Coat Stucco, and Scratch & Brown stucco
 - New or existing stucco and concrete surfaces
 - Renovation of old stucco and concrete walls

COMPOSITION:

- Binder base: 100% elastomeric polymer with surface-hardening property
- Aggregate: Pure crushed marble, rust-free
- Water-based: VOC-compliant. Meets SCAQMD Rule 1113 when using Parex USA Non-VOC Colorants.
- Pigment base: Titanium dioxide
- Color: Parex USA standard colors or tinted to desired custom color.

COVERAGE:

Depending on the condition of the substrate and method of application, approximate coverages per pail are:

E-Lastic Sand 1.0

Aggregate size: 1.0mm
150-165 ft² (14-15 m²)

E-Lastic Sand 1.5

Aggregate size: 1.5mm
120-135 ft² (11-12.5 m²)

E-Lastic Swirl 1.5

Aggregate size: 1.0mm
120-135 ft² (11-12.5 m²)

E-Lastic Choice 0.75

60-150 ft² (6-14 m²)
depending on texture

CONTAINER:

65 lb (29.5kg) net weight in plastic pails.

- Storage: Protect from sun and freezing at all times.
- Do not stack pails more than 3 pails high.
- Shelf Life: Reference Parex USA Expiration Date of Products Technical Bulletin.

DRYING TIME:

24-48 hours under normal conditions. High humidity and low temperatures extend drying time.

CLEAN-UP:

Water-soluble prior to drying. Clean tools and containers with water prior to drying.

SURFACE PREPARATION:

- Remove surface contaminants such as dust or dirt without damaging the substrate.
- For previously painted surfaces, all loose and chalking paint must be removed, and glossy surfaces dulled.
- New concrete and masonry must be clean and cured a minimum of 28 days.
- Check concrete surfaces for alkalinity and treat. Any form-release agents or bond breakers must be removed.

- Uneven concrete or masonry can be leveled with any TeifsBase product or other suitable, compatible product.
- For interior drywall, prepare as for painting.
- Parex USA recommends the use of primers to enhance the appearance and uniformity of the finish, improved coverage, and decrease the chance of efflorescence. This is especially true when using dark colors or finishes with a large aggregate. If specified, prime with Parex USA Primer or Variance VariPrime Sanded, refer to Product Data Sheet.
- For additional options, contact Parex USA Technical Services Department.

MIXING:

- Use clean equipment for mixing and preparation.
- Stir to obtain a homogeneous consistency using a heavy-duty 1/2-in. (13mm) drill with a rust free paddle at 400-500 rpm. Avoid air entrainment.
- A small amount of clean, potable water may be added to aid workability. Do not exceed 8 oz. (.25 L) per full pail of finish. To avoid color and texture variations, add the same amount of water to each pail of finish.

APPLICATION:

- Read the entire label before using this product.
- Always maintain a wet edge and work to corners or joints. For best color consistency, use finish with the same batch number within a wall section. Keep container closed when not in use.
- Use a clean stainless steel trowel and apply a uniform coat the thickness of the largest aggregate size of the finish.
- Texturing: Use a clean plastic float or stainless steel trowel, wipe frequently. Apply moderate pressure with consistent motion, rolling the large aggregates to obtain the desired texture.

LIMITATIONS:

- Ambient and surface temperature must be 40°F (4°C) or above during application and drying time. Supplemental heat and protection from precipitation must be provided as needed.
- Use only on surfaces that are sound, clean, dry, unpainted and free from any residue which may affect the ability of the finish to bond to the surface.
- Application in direct sunlight in hot weather may adversely affect aesthetics.
- Due to the composition of this product, minor pin holes may be noticeable in the cured finish.
- Parex USA is not responsible for color correctness after finish has been applied.

WARNING:

- Read complete warning information printed on product container prior to use. For medical emergency information, call 1-800-424-9300.
- For more information on handling this product refer to its Safety Data Sheet (SDS). The most current SDS and Product Data Sheet (PDS) can be found on our website.
- This Product Data Sheet has been prepared in good faith on the basis of information available at the time of publication. It is intended to provide users with information about the guidelines for the proper use and application of the covered product(s) under normal environmental and working conditions. Because each project is different, Parex USA, Inc. cannot be responsible for the consequences of variations in such conditions, or for unforeseen conditions.

Parex USA, Inc.
4125 E. La Palma Ave., Suite 250
Anaheim, CA 92807
(866) 516-0061 Tech Support: (800) 226-2424

Facilities
French Camp, CA
North Hollywood, CA
Riverside, CA
San Diego, CA

Colorado Springs, CO
Haines City, FL
Duluth, GA
Redan, GA

Albuquerque, NM
Allentown, PA
San Antonio, TX

