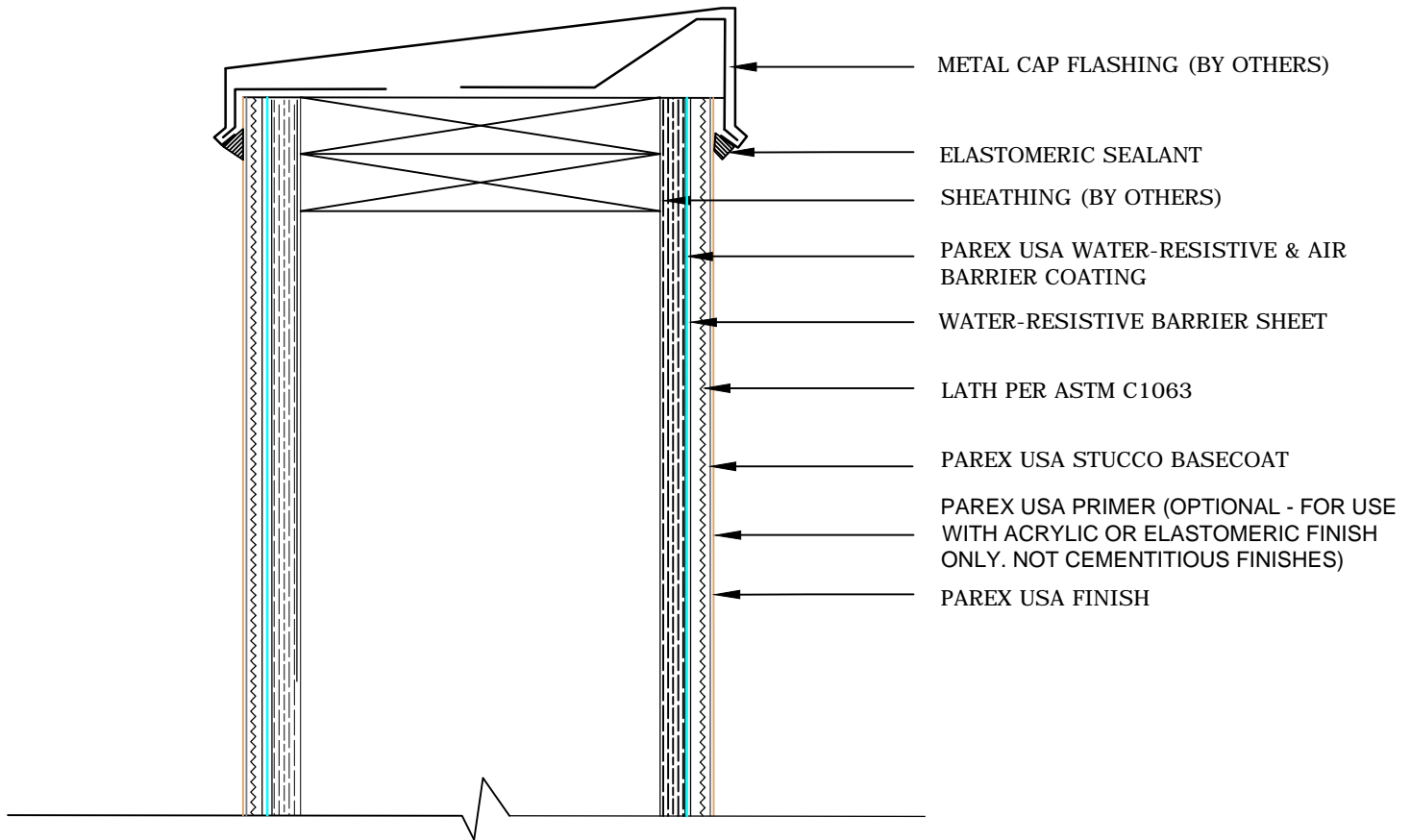


PAREX USA STUCCO ASSEMBLIES



METAL CAP FLASHING (BY OTHERS)

ELASTOMERIC SEALANT

SHEATHING (BY OTHERS)

PAREX USA WATER-RESISTIVE & AIR BARRIER COATING

WATER-RESISTIVE BARRIER SHEET

LATH PER ASTM C1063

PAREX USA STUCCO BASECOAT

PAREX USA PRIMER (OPTIONAL - FOR USE WITH ACRYLIC OR ELASTOMERIC FINISH ONLY. NOT CEMENTITIOUS FINISHES)

PAREX USA FINISH

R1.01 DOUBLE FACED PARAPET / WOOD FRAME

PAREX ARMOURWALL 100 & 300, LAHABRA FASTWALL 100 & 300, ELREY FASTWALL & FIBER-47, TEIFS ONE COAT & SCRATCH & BROWN

HE KRAK-SHIELD WATERMASTER

NOTE:

1. To ensure a continuous air barrier across the building envelope, a continuous air seal should be made at each substrate change, joints/gaps, penetrations and dissimilar material terminations. There must be consideration of the Designer in the overall wall assembly design.
2. Stucco claddings and any cladding using a mortar bed require the use of a slipsheet installed over the Water-Resistive & Air Barrier Coating to prevent adhesion to the stucco.
3. Some coping systems have an inner membrane that drains behind the metal flashing. do not block drainage of these membranes with sealant.
4. Refer to Parex USA specifications specified basecoat products and thickness.

Disclaimer: The design specifications and construction shall comply with all local building codes and standards. Parex USA installation guidelines are for general information and guidance only and Parex USA specifically disclaims any liability for the use of this design, and for design engineering, or workmanship of any project. The assembly shall be designed to prevent condensation within the assembly. The designer and the user shall provide final drawings and specifications. Products shown other than those manufactured by Parex USA are shown for clarity of the Parex USA product only. Contact the Manufacturer for installation instructions. Technical Support: 1-800-226-2424 www.parexusa.com