



Valencia Town Center – Valencia, CA

# ProjectProfile

*"Key Guard is as good as and in some cases better than the closest competitor."*

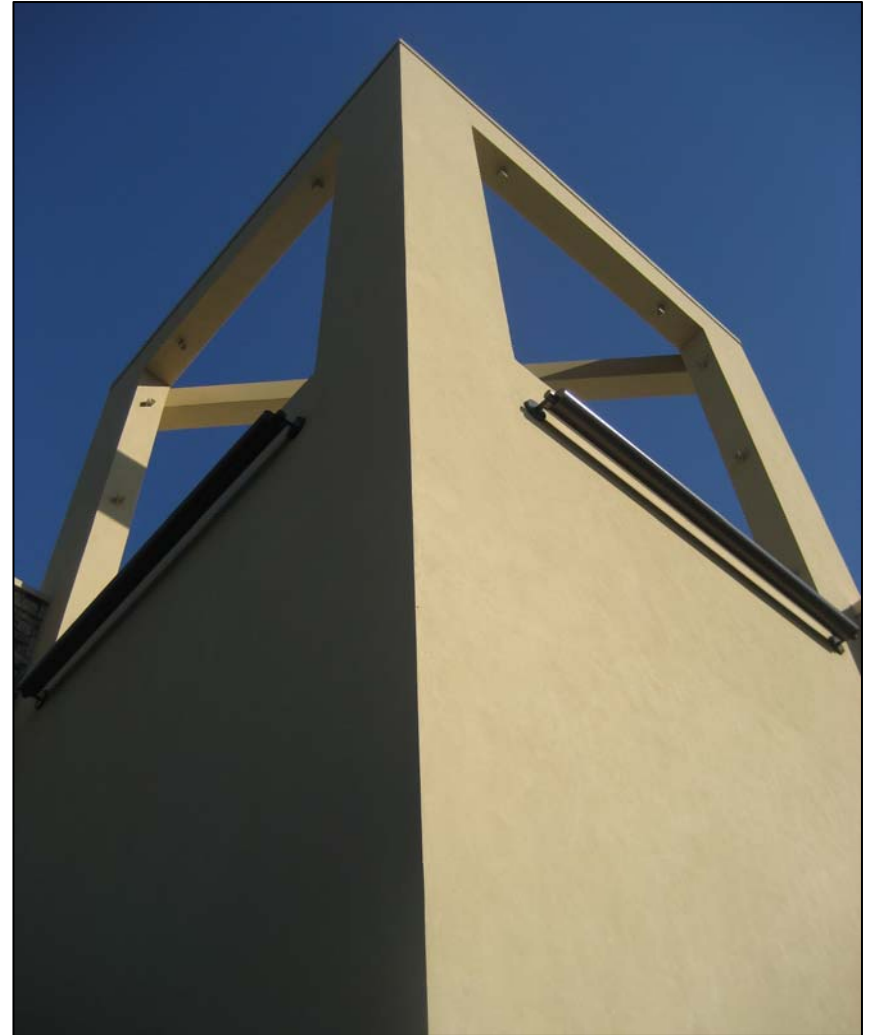
**Size:** 85,000 sq. ft.

**Distributor:** Westside Building Materials

**Applicator:** Rutherford Company

Instilled with the philosophy that customer service is the number one element that sets a great company apart from their competitors, Jim Rutherford has lived by that standard since he founded Rutherford Company, Inc. in 1970.

Rutherford prides itself on the reputation it has earned as an outstanding sub-contractor in the field of lath and plaster, metal stud framing, drywall, EIFS and fireproofing. Delivering the same excellent service and quality to all its customers no matter how large or small their jobs may be. Rutherford Company will perform in a timely and safety conscious manner.



#### **The Challenge**

- Tight schedule
- Multiple rain delays

#### **The Solution**

- Parex Basecoat
- Parex KeyGuard
- Parex Finish